



JUTURNA (M) SDN BHD

2025 / 2026



COMPANY PROFILE

“At Juturna (M) Sdn Bhd, our mission is to connect nations by building ports, harbors, and coastal infrastructure that drive economic growth. We combine cutting-edge technology, a modern fleet, and a multinational workforce to deliver sustainable and cost-effective marine construction solutions.”

TABLE OF *CONTENTS*



JUTURNA

About Company 01

Our History 02

Core Service 03

Fleet Equipment 06

Project Experience 07

Why Choose Us 11

Contact 12



ABOUT COMPANY



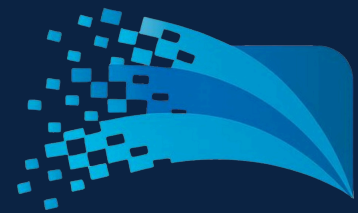
Founded through a strategic joint venture that brings together more than a century of Japanese expertise in marine engineering and the proven operational strength of Southeast Asia, our company represents a powerful fusion of tradition, innovation, and regional insight. The Japanese partner contributes a rich legacy built upon over one hundred years of maritime construction, dredging, and coastal infrastructure projects. This long history is not merely measured in years but in the depth of technical mastery, the precision of engineering methods, and the unwavering commitment to quality that has defined Japanese marine works across generations. From building caissons and seawalls to managing complex reclamation projects that have shaped some of the world's most advanced ports and airports, the Japanese heritage of our joint venture ensures that every project we undertake is grounded in robust technical standards and meticulous attention to detail.



JUTURNA



CORE SERVICE



JUTURNA

Juturna (M) Sdn Bhd is a marine construction and dredging company specializing in port development, coastal infrastructure, and reclamation works. We provide clients with access to a modern fleet of Grab Dredgers and Hopper Barges, enabling us to deliver efficient, cost-effective, and sustainable dredging solutions.

Our team brings extensive experience in managing dredging, reclamation, and marine civil engineering projects across Southeast Asia, ensuring every project meets international safety and quality standards.

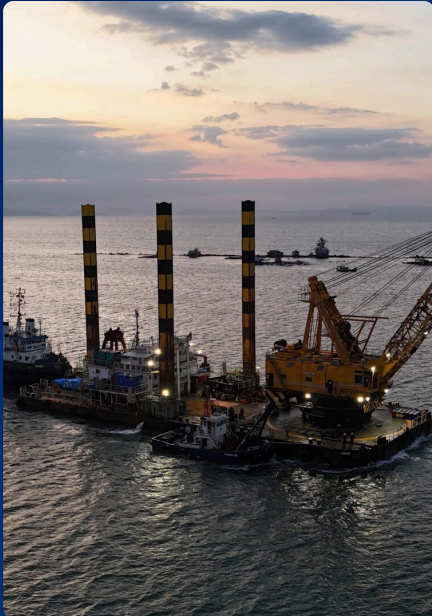
CORE SERVICE



JUTURNA

- Dredging & Reclamation – Capital and maintenance dredging, grab dredging for ports and waterways, land reclamation support.
- Specialize in ‘Hard Material Dredging’ especially in Capital Dredging Works.
- Specialize in all types of ‘Underwater Trenching Works’
- Marine Civil Construction – Coastal protection and port development support.
- Fleet Support & Chartering – Provision of dredging equipment and marine assets, integrated project management.

EQUIPMENT



Grab Dredgers

- *Work vessels equipped with cranes and large grab buckets.*
- *Used to excavate sediments from the seabed, maintaining and deepening port basins, channels, and navigation routes.*
- *Capable of handling hard soil and compacted material where precision is required.*
- *Based on Japanese crane manufacturing technology, ensuring high durability and performance.*

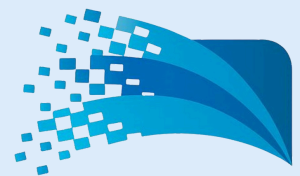


Hopper / Gatt Barges

- *Work vessels designed to load, transport, and dispose of dredged or rock material.*
- *Operate with grab dredgers to efficiently remove and relocate seabed material.*
- *Used for constructing mounds for caissons (foundations of breakwaters) and for forming rubble-mound seawalls.*
- *Essential in both dredging and coastal protection projects, preventing erosion and enabling land reclamation.*



EQUIPMENT



JUTURNA

TRITON



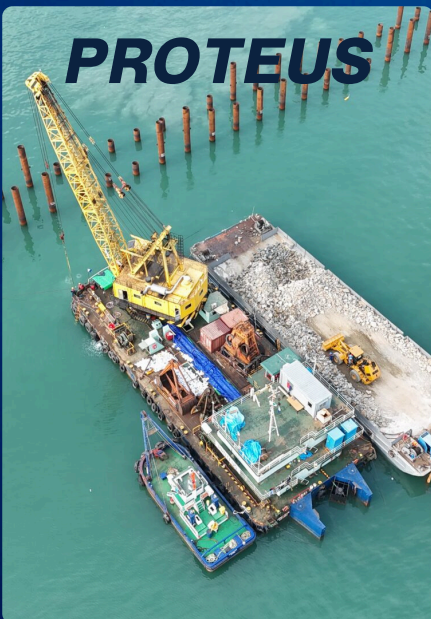
- Standard bucket: 25m³
- Heavy bucket: 9m³
- Chisel: 50t
- 3 spuds, 2 fixed spuds in front and 1 kick spud in back

NEREID



- Orange bucket: 25m³
- Heavy bucket: 9m³
- Chisel: 50t
- 3 spuds, 2 fixed spuds in front and 1 kick spud in back

PROTEUS



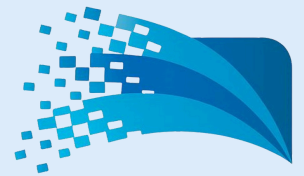
- Standard bucket: 8m³
- Luck arm bucket: 8m³
- Orange bucket: 4m³
- 4-point anchor system

LARISSA



- Orange bucket :2.5m³
- Luch arm bucket: 5m³
- 4-point anchor system

EQUIPMENT



JUTURNA

GALLE1501



- Capacity: 1500m³

GALLE1502



- Capacity: 1500m³

GALLE1504



- Split Hopper barge
- Capacity 1500m³

GALLE1001



- Capacity: 1000m³

EQUIPMENT



JUTURNA

GALLE2001



- Capacity: 2000m³

ARAGO1



- 1000ps x 2unit

ARAGO3



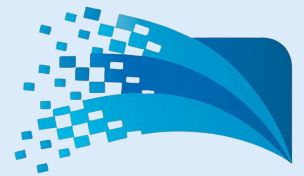
- 800ps x 2unit

ARAGO4



- 800ps x 2Unit
- Pusher Tug

EQUIPMENT



JUTURNA

ADAMS



ADAMS2



HIPPOCAMP



- 550ps x 2unit

PSAMATHE



- 550ps x 2unit

PROJECT *EXPERIENCE*

At Juturna (M) Sdn Bhd, our approach to how we work is defined by a commitment to excellence, innovation, and a customer-centric mindset. We follow a set of core principles that guide our daily operations:



JUTURNA



- Client-Centric Focus: Our customers are at the heart of everything we do. We actively listen to their needs and challenges, and we tailor our solutions to meet and exceed their expectations.
- Innovation and R&D: We invest significantly in research and development, consistently seeking out new technologies and methodologies to enhance our services. Innovation is woven into our company culture, and it's how we stay ahead in a rapidly evolving market.

"The heart of our company beats with the rhythm of collaboration. We cherish the power of teamwork and diverse perspectives."



PROJECT *EXPERIENCE*



Capital Dredging Works (Hard Material Dredging Works)

- Successfully executed Capital dredging Works and Hard Material Dredging Works throughout South East Asia with our dedicated Heavy Duty Grab Dredgers and Hopper Barges.



Port Expansion & Container Terminals

- Executed grab dredging operations to deepen navigation channels and turning basins to required draft levels (up to -15 m).
- Managed disposal and transport of dredged material using hopper barges with capacities up to 3,000 m³.
- Supported quay wall and berth construction with precise seabed preparation for heavy caisson placement.



PROJECT *EXPERIENCE*



Coastal Reclamation Works

- Conducted large-scale reclamation projects involving sand filling and dredged material relocation.
- Utilized grab dredgers and hopper barges for the controlled deposition of fill material.
- Delivered reclaimed platforms for industrial and port-related developments exceeding 100 hectares.



Maintenance Dredging for Ports & Waterways

- Performed annual/periodic dredging to maintain safe navigation depths for container terminals, oil jetties, and general cargo berths.
- Removed siltation and compacted seabed layers using high-capacity grab dredgers. - Achieved disposal through environmentally compliant dumping sites designated by port authorities.



PROJECT *EXPERIENCE*



Coastal Protection & Seawalls

- Employed hopper barges to deliver and place armor rocks and core materials for rubble-mound seawalls.
- Supported caisson foundation preparation and placement works.
- Integrated dredging with marine civil engineering to provide long-term coastal erosion protection.



WHY *CHOOSE US ?*

- Exclusive access to Juturna's modern fleet of dredging equipment.
- Proven expertise in grab dredging including heavy duty grab dredgers and reclamation projects.
- Strong regional presence and partnerships across Southeast Asia.
- Commitment to efficiency, safety, and environmental sustainability.





JUTURNA



CONTACT INFORMATION

BOOKLET

Let's Connect With Us!



+607 - 380 6165



enquiry@juturna.com.my



www.juturna.com.my



No. 15, Jalan Bayu 4,
Bandar Seri Alam,
81750, Masai, Johor.

